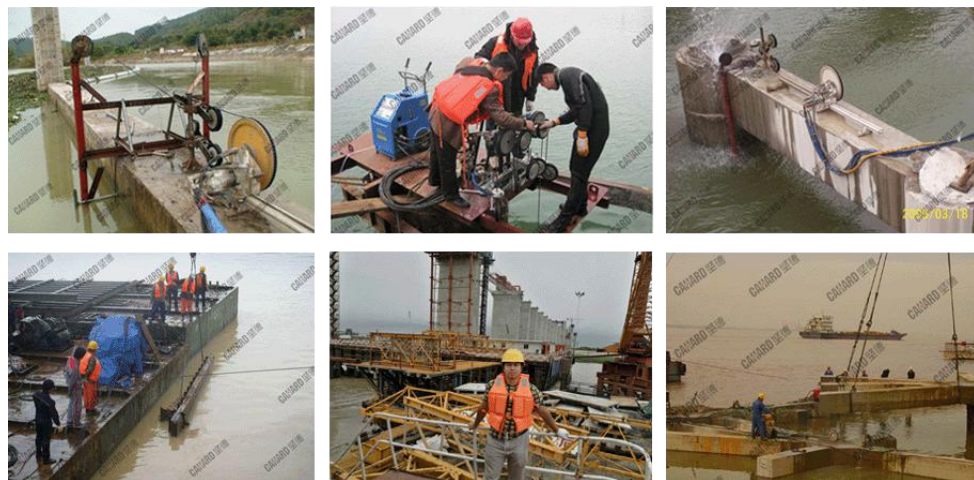
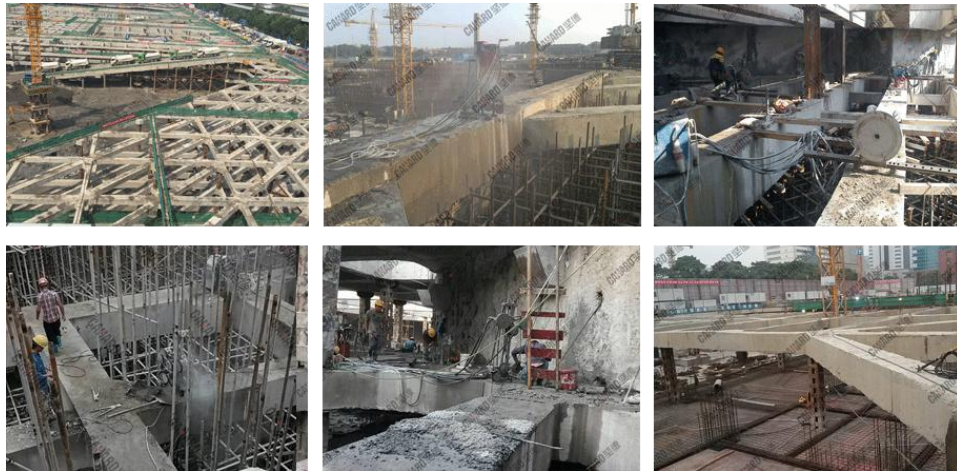


Company Introduction:

Jiande is a professional company that focuses on the research and development of reinforced concrete drilling&cutting diamond tools and stone quarrying diamond tools. The company covers an area of more than 30.000sqm, of which more than 5000sqm is the R&D center, and is mainly engaged in Jiande drilling&cutting construction and Jiande diamond tool manufacturing. At present, Jiande has over 100 drilling&cutting constructors and over 100 various reinforced concrete drilling &cutting devices. Jiangxi Jiande Concrete Cutting Association was founded in 2012 and has more than 30000 members now. Diamond tools produced by Jiande are partly distributed to the academicians and partly distributed to more than thirty countries and regions all over the world.

The Large Chinese Diamond Wire Saw Base.



Engineering Drill Bit Production Base





Professional OEM Manufacturer



Multi-layer Electroplated Bead-Pioneering multi-layer electroplated diamond wire saw in the world



For quarrying and processing marble & granite Cutting.

Product Feature:

1. Cutting speed: Under the condition of room temperature (20 ~ 30 °C), Put diamond in layer on the matrix to make diamond wire saw. Compare with the traditional hot-pressing sintering and brazing method (which under the condition of more than 800 degrees high temperature), The damages for diamond is bigger by traditional hot-pressing sintering and the brazing method, and the plating method at room temperature has the advantages of small damage to the diamond, high utilization rate of diamond and high cutting edge of the diamond, so cutting speed is higher than the traditional method for manufacturing diamond wire saw, and sharpness speed will increased by 50% or more.
2. Long wire life: The diamond wire saw produced by multi-layer electroplated compare with diamond wire saw produced by traditional hot-pressing sintering, The wire life can increase by more than 30%, and also compare with diamond wire produced by ordinary electroplated method, the wire life will increase more than 300%.
3. The size of diamond wire saw beads can do customization: The diameter of beads can do 2mm~20mm based on customer's request.

Multi-layer Electroplated Diamond Multi-wire Saw



Application

Apply to various granite & marble slabs;

Suit for 5-72wires multi-wire saw machine.

Wire Specification

Bead Diameter	Bead/meter	Application	Coating
Φ8.8	37	Granite&Marble slabs	High stringent plastic
Φ7.3	37		
Φ6.3	37		

Bead Diameter	Hardness of Stone	Cutting SQM/Mt
Φ8.8	Class 1.2.3	18 m ²
Φ7.3	Class 4	12 m ²
Φ6.3	Class 5	9 m ²
Φ5.3	Class 6	6.5 m ²

Multi-layer Electroplated Diamond Wire Saw For Granite & Marble Cutting.



Coating:Rubber+Spring

Bead Diameter: $\Phi 11.5\Phi 11.0\Phi 10.5$

Application

Granite & Marble and Sandstone quarrying;

Granite & Marble block squaring.

Bead Diameter	Hardness of Stone	Cutting SQM/Mt
$\Phi 11.5\Phi 11.0\Phi 10.5$	Class 1.2.3	120 m ²
$\Phi 11.5\Phi 11.0\Phi 10.5$	Class 4	60 m ²
$\Phi 11.5\Phi 11.0\Phi 10.5$	Class 5	25 m ²
$\Phi 11.5\Phi 11.0\Phi 10.5$	Class 6	18 m ²

Multi-layer Electroplated Diamond Wire Saw For Granite & Marble Profiling Cutting.



Coating: High strength plastic

Bead Diameter: $\Phi 9.0\Phi 8.8$

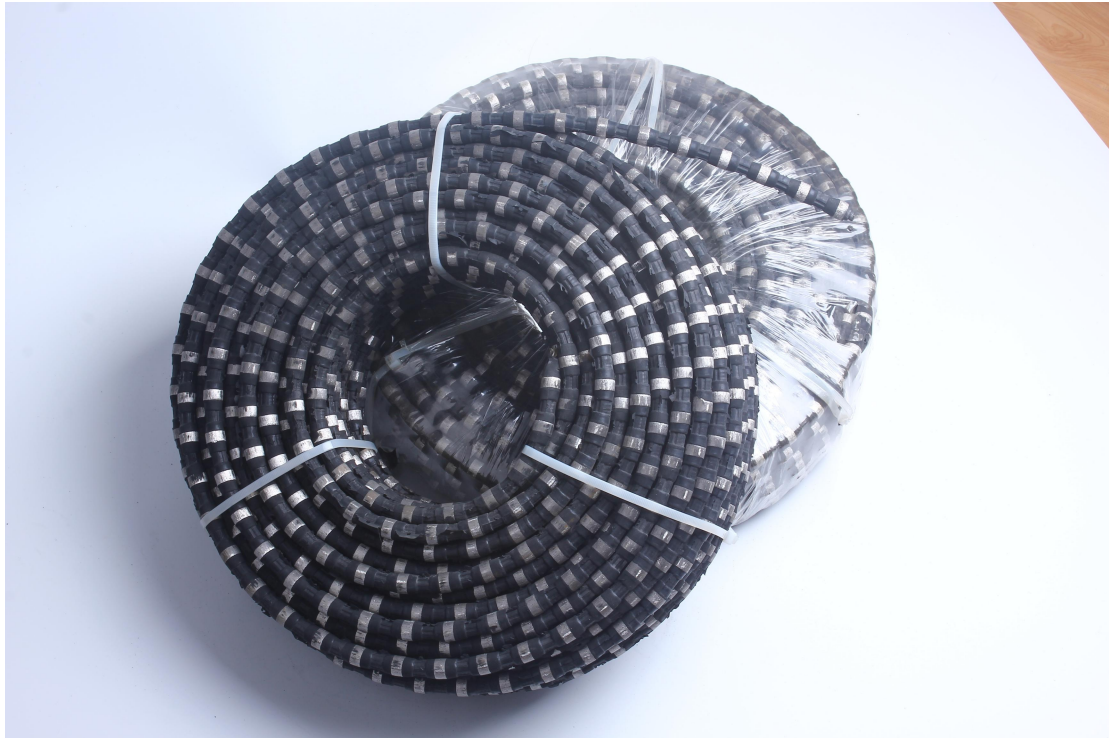
Application

Granite curve cutting;

Other irregular cutting on granite & marble slab.

Bead Diameter	Hardness of Stone	Cutting SQM/Mt
$\Phi 8.8$	Class 1.2.3	18 m ²
$\Phi 7.3$	Class 4	12 m ²
$\Phi 6.3$	Class 5	9 m ²
$\Phi 5.3$	Class 6	6.5 m ²

Multi-layer Electroplated Diamond Wire Saw For Concrete Cutting.



Coating: Rubber+Spring

Bead Diameter: $\Phi 11.5\Phi 11.0\Phi 10.5$

Application

Cutting building, bridge, dam, concrete tube, big pillar, etc;

Under water reinforced concrete cutting;

Reinforced concrete fast dry-cutting;

High-speed railway bridge, tunnel and metal structure piece cutting.

Bead Specification(mm)	NO. of Beads(/m)	Fixation	Cutting Object	Linear velocity(m/s)	Cutting rate(m/h)	Cutting Life(m/m)
$\Phi 11.5\Phi 11.0\Phi 10.5\Phi 10$	40	Rubber+Spring	High-strength reinforcing concrete	22-25	1-3	2-4
$\Phi 11.5\Phi 11.0\Phi 10.5\Phi 10$	40	Rubber+Spring	Underwater reinforcing concrete	20-23	1-2	2-3
$\Phi 11.5\Phi 11.0\Phi 10.5\Phi 10$	40	Rubber+Spring	Steelworks or structures made of other metals	19-21	0.8-1.5	0.8-2

Multi-layer Electroplated Diamond Wire Saw For Metal Cutting.



Application:Pure Iron,Pure Copper,Metal-work,
Such as :Shipwrecks and steel-casting cutting

Bead Specification(mm)	NO. of Beads(/m)	Fixation	Cutting Object	Linear velocity(m/s)	Cutting rate(sq m/h)	Cutting Life(m/m)
Ø11.5Ø11.0Ø10.5	40	Rubber+Spring	Large casting struction	22-28	0.2-0.5	0.5-1
Ø11.5Ø11.0Ø10.5	40	Rubber+Spring	Large casting struction	25-30	0.15-0.5	0.5-1
Ø11.5Ø11.0Ø10.5	40	Rubber+Spring	Large casting struction	12-15	0.5-1	0.5-1

solemn commitment of Jiande

- (1)If any like products have faster speed of strand cutting than Jiande or any like products have the service life longer than Jiande,the product can be returned to us.
- (2)If the strand cutting of Jiande has any beading,deflected grind,or broken strand,the product can be returned to us.

Diamond wire saw for reinforced concrete



this product is suitable for the cutting of reinforced concrete and steel structure,can be applied to the cutting of houses,bridges,supporting beam and other constructions,as well as to underwater concrete,wire-rope and shipwrecks cutting.)

product model	specificat ion(mm)	Numbe r of beads	fixation	cutting object	linear velocity (m/s)	cutting rate(m/h)	cutting life(m/m)
GD-11	Φ11.5Φ11.0	40	rubber+ spring	high-str ength reinforci ng concrete	22-25	1-3	2-4
GD-12	Φ11.5Φ11.0	40	rubber+ spring	underwa ter reinforc ed concrete	20-23	1-2	2-3
GD-12	Φ11.5Φ11.0	40	rubber+ spring	steelwor ks or structure s made of other metals	19-21	0.8-1.5	0.8-2

Diamond wire saw for granite mining



Apparently, the technology of mine quarrying with granite diamond wire saw has brought about a reform of stone quarrying. This product is applicable to the quarrying of various granites and sandstone mines. It has the advantage of high cutting efficiency, smooth cutting face, high yield, low cost, high safety and environmental protection, etc.

product model	Bead Specific ation(m m)	Num ber of bead	Fixatio n	Cuttin g Object	Linear velocit y (m/h)	Cuttin g rate(m /h)	Cuttin g life(m/ m)
GD-21	Φ11.5Φ 11.0	40	Rubber	Hard granite	26-35	5-8	8-18
GD-22	Φ11.5Φ 11.0	40	Rubber	Mediu m-hard granite	30-40	8-18	18-25
GD-23	Φ11.5Φ 11.0	40	Rubber	Soft granite	35-45	18-25	28-45

Diamond wire saw for marble mining



This product is suitable for mining of various marble mines, has the advantage of high mining efficiency, high guaranteeing rate of raw material, high yield, low cost and environmental protection, etc. The application of rubber in the wire saw has the following benefits: the better binding force and connection between the rubber and wire cable are better so that the severe impact during operation can be endured; rubber has good thermal endurance to adapt the application when there is a shortage of cooling water, eg., working performance in water mist condition; the flexibility is strong so that the eccentric wear in bead operation can be reduced and it is more adaptive to smaller radius of

curvature。

product model	Bead Specification(m m)	Number of bead	Fixation	Cutting Object	Linear velocity (m/h)	Cutting rate(m /h)	Cutting life(m/m)
GD-31	Φ11.5Φ 11.0	40	Rubber	Hard Marble	30-35	8-15	25-35
GD-32	Φ11.5Φ 11.0	40	Rubber	Medium-hard Marble	33-38	10-18	40-80
GD-33	Φ11.5Φ 11.0	40	Rubber	Soft Marble	35-42	18-25	100-150

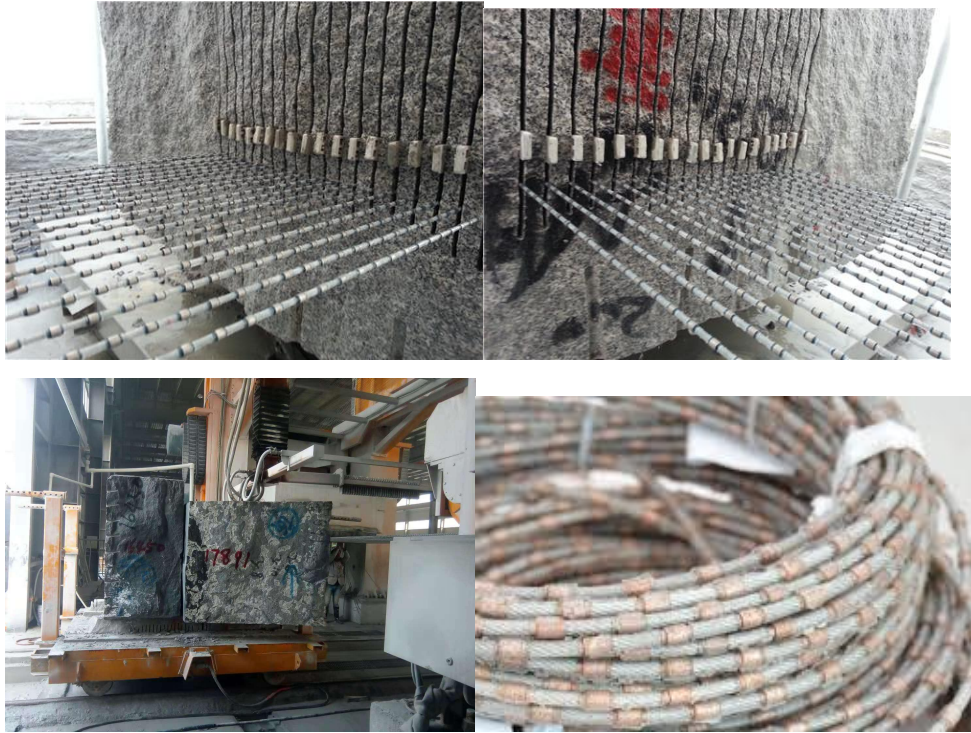
Plastic Diamond wire saw for Profiling



Fast speed cutting with multi-layer electroplated Bead

product model	Bead Specification(m m)	Number of bead	Fixation	Cutting Object	Linear velocity (m/h)	Cutting rate(m/h)	Cutting life(m/m)
GD-31	Φ8.8	40	High strength plastic	Hard granite	26-35	5-8	6-15
GD-32	Φ8.8	40	High strength plastic	Medium-hard granite	30-40	8-18	15-22
GD-33	Φ8.8	40	High strength plastic	Soft granite	35-45	18-25	25-40

Diamond Multi-wire saw



Application:

Apply to various granite&marble slabs,suit for 5-72wires multi-wire saw machine.

The smallest diameter can be customized:3mm

product model	Bead Specification(m m)	Number of bead	Fixation	Cutting Object	Linear velocity (m/h)	Cutting rate(m/h)	Cutting life(m/m)
GD-31	Φ7.3 Φ6.3 Φ5.3	40	High strength plastic	Hard granite	26-35	5-8	6-15
GD-32	Φ7.3 Φ6.3 Φ5.3	40	High strength plastic	Medium-hard granite	30-40	8-18	15-22
GD-33	Φ7.3 Φ6.3 Φ5.3	40	High strength plastic	Soft granite	35-45	18-25	25-40

solemn commitment of Jiande

(1) If any like products have faster speed of strand cutting than Jiande or any like products have the service life longer than Jiande, the product can be returned to us.

(2) If the strand cutting of Jiande has any beading, deflected grind, or broken strand, the product can be returned to us.

Segment



High sharpness,long cutting life,low noise while cutting,stable cutting capacity,flat cutting surface,

Application:limestone,processing marble,granite,and sand stone.

Circular Blade Saw



It is no exaggeration to say that it is "cutting iron".

(1) Diamond reinforced concrete saw blade

Saw blade for building wall and bridge engineering is mainly applied for the cutting of walls, bridges and constructional engineering. Appropriate for various imported and domestic wall saws, including portable cutting machine and road cutting machine, it has the advantage of fast cutting speed, high yield, no teeth slippage, low risk of deformation, security and stability.

Model and specification of Cahard's special concrete wall saw	
Take the drill of Φ102mm (4") cutting the reinforced concrete wall of 24cm for example	
Cutting Object	C25Designed concrete strength for concrete bridge:C25 Pc42.5 Cement mark:Pc42.5 fine aggregate:10-30mm rubber slumping:10-30 performance density:2400kg/m³ sand ratio:32% water cement ratio:0.38

	5proportioning:water:0.38 cement:1.00 fine aggregate:1.18 coarse aggregate:2.5 time of setting:360hours			
product specification	Φ400 road blade Φ800wall sawΦ1000wall saw			
cutting depth	6cm30cm 40cm			
cutting rate	2.25m/min 2.5 m²/hour 3 m²/hour			
cutting area	80 m² 25 m² 30 m²			
Model and specification of Cahard’s special concrete wall saw				
Out Diameter of wall blade	sepecification of segment(mm)	DiameterofCore hole(mm)	quantites of segments	
Φ700mm	28"	40×9×4.8	35/50/60/80/100	40
Φ750mm	30"	40×9×4.8	35/50/60/80/100	42
Φ800mm	32"	40×9×4.8	35/50/60/80/100	46
Φ1000mm	40"	40×9×4.8	35/50/60/80/100	58
Φ1200mm	48"	40×9×4.8	35/50/60/80/100	68
Φ1600mm	60"	40×9×6	50/60/80/100	96
Φ1800mm	68"	340×9×6	50/60/80/100	108

(2) Road blade

Project case list of Cahard's special concrete blade				
Take the drill of Φ102mm (4") cutting the reinforced concrete wall of 24cm for example				
Cutting Object		C25Designed concrete strength for concrete bridge:C25 Pc42.5 Cement mark:Pc42.5 fine aggregate:10-30mm rubber slumping:10-30 performance density:2400kg/m ³ sand ratio:32% water cement ratio:0.38 5proportioning:water:0.38 cement:1.00 fine aggregate:1.18 coarse aggregate:2.5 time of setting:360hours		
product specification	Φ400 road blade	Φ800wall saw	Φ1000wall saw	

cutting depth	6cm	30cm	40cm	
cutting rate	2.25m/min	2.5 m ² /hour	3 m ² /hour	
cutting area	80 m ²	25 m ²	30 m ²	
Model and specification of Cahard's special concrete wall saw				
Out Diameter of blade		Sepecification of segment(mm)	Diameter of Core hole(mm)	Quantity of Segment
Φ300mm	12"	40×9×3.2	25.4/36/50/60	18
Φ350mm	14"	40×9×3.2	25.4/36/50/60	24
Φ400mm	20"	40×9×3.8	25.4/36/50/60	36
Φ600mm	24"	40×9×4.8	35/50/60	36

solemn commitment of Jiande

(1) If any like products have faster speed of strand cutting than Jiande or any like products have the service life longer than Jiande, the product can be returned to us.

(2) If the strand cutting of Jiande has any beading, deflected grind, or broken strand, the product can be returned to us.

Diamond Wire Saw Bead

(1) Multi-layer electroplated bead



(2) Normal Electroplated bead



(3) Sintered Bead



(4) Soldered Brazed Bead



Any sizes of beads can be customized

Other Accessories of diamond wire saw

(1) Rubber



(2) core steel rope



(3) Joint



(4) bead's body



(5) Spring



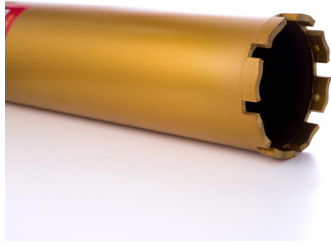
Diamond Bit

CAHARD

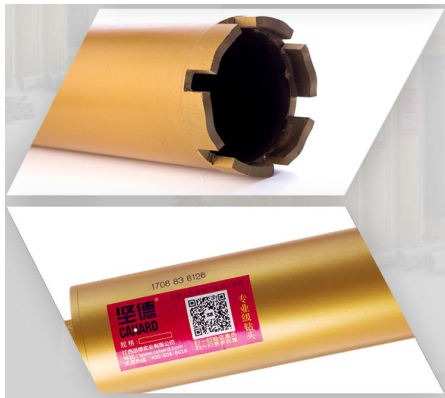


JIANGXI JIANDE INDUSTRIAL CO.,LTD





DETAIL




Its the patented technology specialized in the drilling for reinforced concrete of various labels.its used for the drilling work in the hourse,building,road,railway,bridge,etc.The speed of drilling is much faster than the like product.The service life may reach over 20 meters.

Project case list of Cahard's special concrete blade			
Take the drill of $\Phi 102\text{mm}$ (4") cutting the reinforced concrete wall of 24cm for example			
Object being drilled	Design strength of concrete:C30		
	Cement	Mark:Pc42.5	Fine
	aggregate:10-30mm	detritus	and

		cobblestone Slump:10-30 Apparent density:2400kg/m³ Sand Ratio:32% Water cement ratio:0.38 Ration:water 0.38 cement:1.00 fine aggregate:1.18 coarse aggregate:2.5 Setting time:720hours		
speed of drilling		3mins 30 seconds(24cm concrete wall,cut off two steel bars of 20mm)		
length of drilling		21.6m(concrete wall of 24cm,90holes)		
size of rebar		(deformed steel bar of 20mm)		
amound of rebar		2(rebar at the top and bottom layer)		
time of bread of the single rebar		45seconds		
Specification of the Drill bit for Concrete				
OD of Drill		Valid Length(mm)	Specification of Drill Tooth(mm)	Quantity of Drill Tooth
Φ25mm	1"	350(400)	22×9×(3.5)4	3
Φ32mm	1-1/4"	350(400)	22×9×(3.5)4	3
Φ36mm	1-1/2"	350(400)	22×9×(3.5)4	3
Φ38mm	1-1/2"	350(400)	22×9×(3.5)4	4
Φ40mm	1-2/3"	350(400)	22×9×(3.5)4	4
Φ44mm	1-3/4"	350(400)	22×9×(3.5)4	4
Φ46mm	1-4/5"	350(400)	22×9×(3.5)4	4
Φ51mm	2"	350(400)	22×9×(3.5)4	5
Φ56mm	2-1/4"	350(400)	22×9×(3.5)4	5
Φ58mm	2"	350(400)	22×9×(3.5)4	5
Φ63mm	2-1/2"	350(400)	22×9×(3.5)4	6
Φ76mm	3"	350(400)	22×9×(3.5)4	7
Φ83mm	3-1/4"	350(400)	22×9×(3.5)4	8
Φ89mm	3-1/2"	350(400)	22×9×(3.5)4	8
Φ102mm	4"	350(400)	22×9×(3.5)4	9
Φ108mm	4-1/4"	350(400)	22×9×(3.5)4	10
Φ114mm	4-1/2"	350(400)	22×9×(3.5)4	10
Φ120mm	4-3/4"	350(400)	22×9×(3.5)4	11
Φ127mm	5"	350(400)	22×9×(3.5)4	11
Φ132mm	5-1/4"	350(400)	22×9×(3.7)4.2	12
Φ140mm	5-1/2"	350(400)	22×9×(3.7)4.2	12
Φ152mm	6"	350(400)	22×9×(3.7)4.2	12
Φ159mm	6-1/4"	350(400)	2×9×(4)4.5	14
Φ167mm	6-1/2"	350(400)	22×9×(4)4.5	14
Φ180mm	7"	350(400)	22×9×(4)4.5	15
Φ202mm	8"	350(400)	22×9×(4)4.5	16
Φ229mm	9"	350(400)	22×9×(4)4.5	18


Φ254mm	10"	350(400)	22×9×(4)4.5	21
Φ300mm	12"	350(400)	22×9×5	25
Φ355mm	14"	350(400)	22×9×5.5	29
Φ400mm	15-1/2"	350(400)	22×9×6	34

The Trisomic Drill bit



三体水钻钻头的特性

分体式钻头三体拆分 多个刀头携带方便
长期作业 负重轻便



CAHARD
接首丝口行业规格均有





CAHARD



JIANGXI JIANDE INDUSTRIAL CO.,LTD

CAHARD



JIANGXI JIANDE INDUSTRIAL CO.,LTD



The material contains the high-quality diamond, metal powder and steel material. The speed of drilling is very fast. The time of drilling for the concrete wall of 24cm needs 2-5 minutes to accomplish the drilling work. The service life reaches over 18 meters.

Project case list of Cahard's the special Trisomic Drill Bit	
Take the drill of $\Phi 102\text{mm}$ (4") cutting the reinforced concrete wall of 24cm for example	
Object being drilled	Design strength of concrete: C30 Cement Mark: Pc42.5 Fine aggregate: 10-30mm detritus and cobblestone Slump: 10-30 Apparent density: 2400kg/m^3 Sand Ratio: 32% Water cement ratio: 0.38 Ration: water 0.38 cement: 1.00 fine aggregate: 1.18 coarse aggregate: 2.5 Setting time: 720 hours
speed of drilling	3mins 30 seconds (24cm concrete wall, cut off two steel bars of 20mm)
length of drilling	21.6m (concrete wall of 24cm, 90 holes)
size of rebar	(deformed steel bar of 20mm)
amound of rebar	2 (rebar at the top and bottom layer)
time of bread of the single rebar	45 seconds

Diagram of Project case of Jiande delicatod drill for cobblestone				
OD of Drill		Valid Length(mm)	Specification of Drill Tooth(mm)	Quantity of Drill Tooth
Φ25mm	1"	350(400)	22×9×(3.5)4	3
Φ32mm	1-1/4"	350(400)	22×9×(3.5)4	3
Φ36mm	1-1/2"	350(400)	22×9×(3.5)4	3
Φ38mm	1-1/2"	350(400)	22×9×(3.5)4	4
Φ40mm	1-2/3"	350(400)	22×9×(3.5)4	4
Φ44mm	1-3/4"	350(400)	22×9×(3.5)4	4
Φ46mm	1-4/5"	350(400)	22×9×(3.5)4	4
Φ51mm	2"	350(400)	22×9×(3.5)4	5
Φ56mm	2-1/4"	350(400)	22×9×(3.5)4	5
Φ58mm	2"	350(400)	22×9×(3.5)4	5
Φ63mm	2-1/2"	350(400)	22×9×(3.5)4	6
Φ76mm	3"	350(400)	22×9×(3.5)4	7
Φ83mm	3-1/4"	350(400)	22×9×(3.5)4	8
Φ89mm	3-1/2"	350(400)	22×9×(3.5)4	8
Φ102mm	4"	350(400)	22×9×(3.5)4	9
Φ108mm	4-1/4"	350(400)	22×9×(3.5)4	10
Φ114mm	4-1/2"	350(400)	22×9×(3.5)4	10
Φ120mm	4-3/4"	350(400)	22×9×(3.5)4	11
Φ127mm	5"	350(400)	22×9×(3.5)4	11
Φ132mm	5-1/4"	350(400)	22×9×(3.7)4.2	12
Φ140mm	5-1/2"	350(400)	22×9×(3.7)4.2	12
Φ152mm	6"	350(400)	22×9×(3.7)4.2	12
Φ159mm	6-1/4"	350(400)	22×9×(4)4.5	14
Φ167mm	6-1/2"	350(400)	22×9×(4)4.5	14
Φ180mm	7"	350(400)	22×9×(4)4.5	15
Φ202mm	8"	350(400)	22×9×(4)4.5	16
Φ229mm	9"	350(400)	22×9×(4)4.5	18
Φ254mm	10"	350(400)	22×9×(4)4.5	21
Φ300mm	12"	350(400)	22×9×5	25
Φ355mm	14"	350(400)	22×9×5.5	29
Φ400mm	15-1/2"	350(400)	22×9×6	34

Jiangxi Jiande Industrial CO., LTD

Tel:+86-0794 7221178

Fax:+86-0794 7221179

Email: sales@cahard.com Contact Person:Ms Alice

ADD:JINSHANKOU,NANCHENG,JIANGXI PROVINCE,CHINA

Mobile&whats app:+86-15902013674